

EXELIA

FLOORING SIMPLIFIED





WHY EXELIA



Fast and easy installation



No glueing or grouting required



Low installation cost



Straight seams



Very resistant to static and dynamic loads



Ready to be used right away – no curing required



Good sound absorption



Eco-friendly

MULTI-SEAL SYSTEM

Can be glued together (optional)

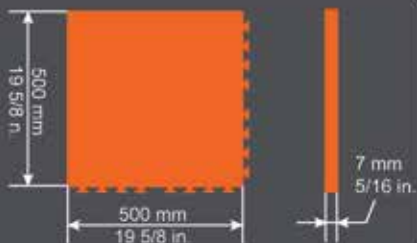
Can be welded together (optional)



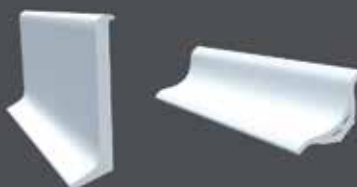
Interlocking system



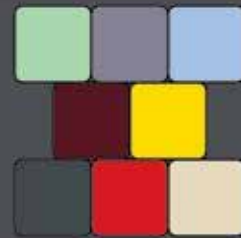
Dimensions



Profiles - Baseboards



Color options



*customizable up on request

EXELIA

FLOORING SIMPLIFIED

EXELIA FLOORING HAS IT COVERED

INDUSTRIAL

Exelia easily conforms to machinery and in-ground fixtures such as hydraulic lifts and presses. It can support static loads such as equipment and shelving. It can also handle dynamic loads such as forklifts, trucks and pallet jacks. Oil and chemical spills can be easily cleaned up without staining. Repairs can be performed in-house and require minimal downtime. Color patterns can identify different work and task zones.

PHARMA / FOOD

Exelia offers an easy to maintain, clean and hygienic surface to support pharma and food industries and incorporates comfort and serenity into the workplace. Baseboards can be installed for optimum results and a finished look.

RETAIL / AUTOMOTIVE

Imagine your logo or business name or even that particular shade of green as part of your flooring. Now you can make a statement with Exelia. Showrooms with your logo or patterns can optimize floor capacity and reduce clutter. Exelia is ready for your changing business needs and you can rearrange your tiles as often as you need.

INDOOR SPORTS ARENAS AND GYMNASIUMS

A perfect indoor volleyball court can be quickly assembled permanently or can be taken apart and stored to make way for a basketball court which in turn can give way to a dance floor. Exelia will enable you to host many events in one arena.



INSTITUTIONS

All institutional organizations can benefit from Exelia. Exelia is an ideal solution for daycares, preschools, primary education and higher learning facilities. Starting with durability, traction and ease of maintenance to design and color aesthetics, sound dampening and the lack of phthalates and harmful plasticizers, we know what goes into Exelia and we trust it around our future generations.



EXELIA TRULY IS FLOORING SIMPLIFIED

Exelia is a cost-effective floor covering produced from virgin PVC that is absent of phthalates and harmful plasticizers which are known to be health hazards. Exelia is built to withstand rigorous use in harsh industrial environments making it ideal for cleanrooms, laboratories, schools, office spaces, gymnasiums, sports centers, garages, warehouses, production and assembly facilities. Exelia's unique, innovative multi-seal system and hidden seams is appealing as it is functional. The installation process is simple and changes or repairs are the least of a client's concerns.

			Exelia STD 7 mm
Technical Specifications	Standard	Unit	Average values
Dimensions	EN ISO 24342	mm / in	500X500 / 19.7X19.7 250X250 / 9.8X9.8
Overall thickness	EN ISO 24346	mm / in	7 / 0.28
Total mass per unit area	EN ISO 23997	kg/m ² - lb/m ² (1 m ² ≈ 1.2 yard ²)	500X500: 9.15 / 20.17 250X250: 9.09 / 20.04
Density	EN ISO 1183	g/cm ³	1.365
Hardness	EN ISO 868	Shore A	92 ± 3
CE marking	EN 14041	/	Compliant
Burning behavior	EN 13501-1	/	Class C _{fr} -s2 with and without adhesives 
Critical heat flux	EN ISO 9239-1 ASTM E-648	kW/m ² W/cm ²	5.8 0.58 (Class I)
Wear resistance (F _v)	EN 660-2	mm ³	4.4
Wear groups	EN 649	/	M
Classification	EN ISO 10874	/	
Castor chair test	EN 425	/	No disturbance to the surface other than a slight change in appearance. No delamination shall occur.
Residual indentation (average)	EN ISO 24343-1	mm	0.02
Resistance to static loads	/	kg/cm ²	50
Dimensional stability	EN ISO 23999	%	≤ 0.25
Curling after exposure to heat	EN ISO 23999	mm	≤ 2
Flexibility (test performed with a 20 mm mandrel)	EN ISO 24344 Method A	/	No cracking
Seam strength	EN 684	N/50 mm	200 (not welded)
Slip resistance	DIN 51130	/	R10 Slip angle = 14.5°
Thermal resistance	ASTM E1530-11	m ² K/W	0.03 Suitable for floor heating system
Thermal conductivity	ASTM E1530-11	W/(mK)	0.19
Impact sound reduction	EN ISO 10140-3 EN ISO 717-2	dB	10
VOC Emissions (Classification according to the French Decree No. 321/2011 based on emission after 28 days)	EN ISO 16000-9	µg/m ³	Emission class: A+ Total VOC = 23 Formaldehyde < 3
Dielectric strength	CEI EN 60243-1	kV/mm	27.33
Chemical resistance against acids (except sulphuric acid), alkalis and hydrocarbons (oil)	/	/	No deterioration
Chemical resistance against PVC solvents (ketones, chlorinated solvents and phthalates).	/	/	Does not resist prolonged exposure.