
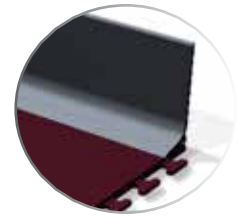
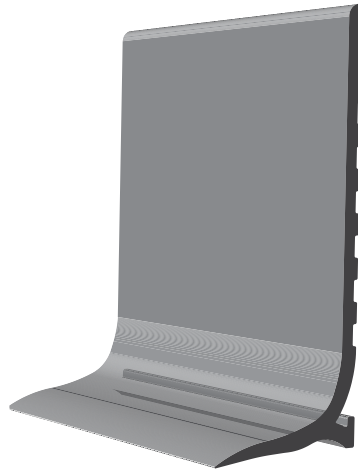


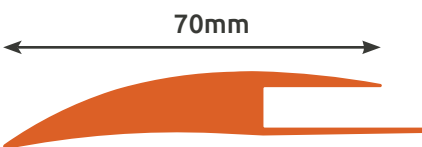
Length: 2m

Available colors:  



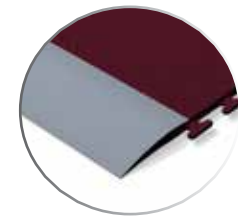
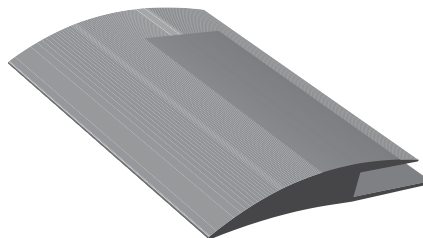
## Baseboard

This baseboard is designed to cover the gap between the flooring and the walls, hence it is best suited for applications that require HACCP compliance.



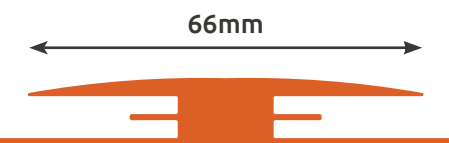
Length: 2m

Available colors:  



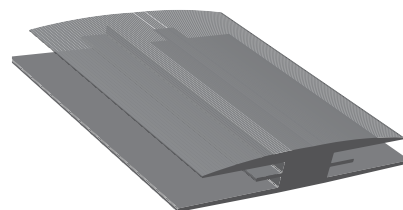
## Ramp

This ramp is designed to help facilitate the movement of light and heavy vehicles from the existing floor to Exelia. It can be glued with neoprene adhesive or secured with screw anchors.



Length: 2m

Available colors:  

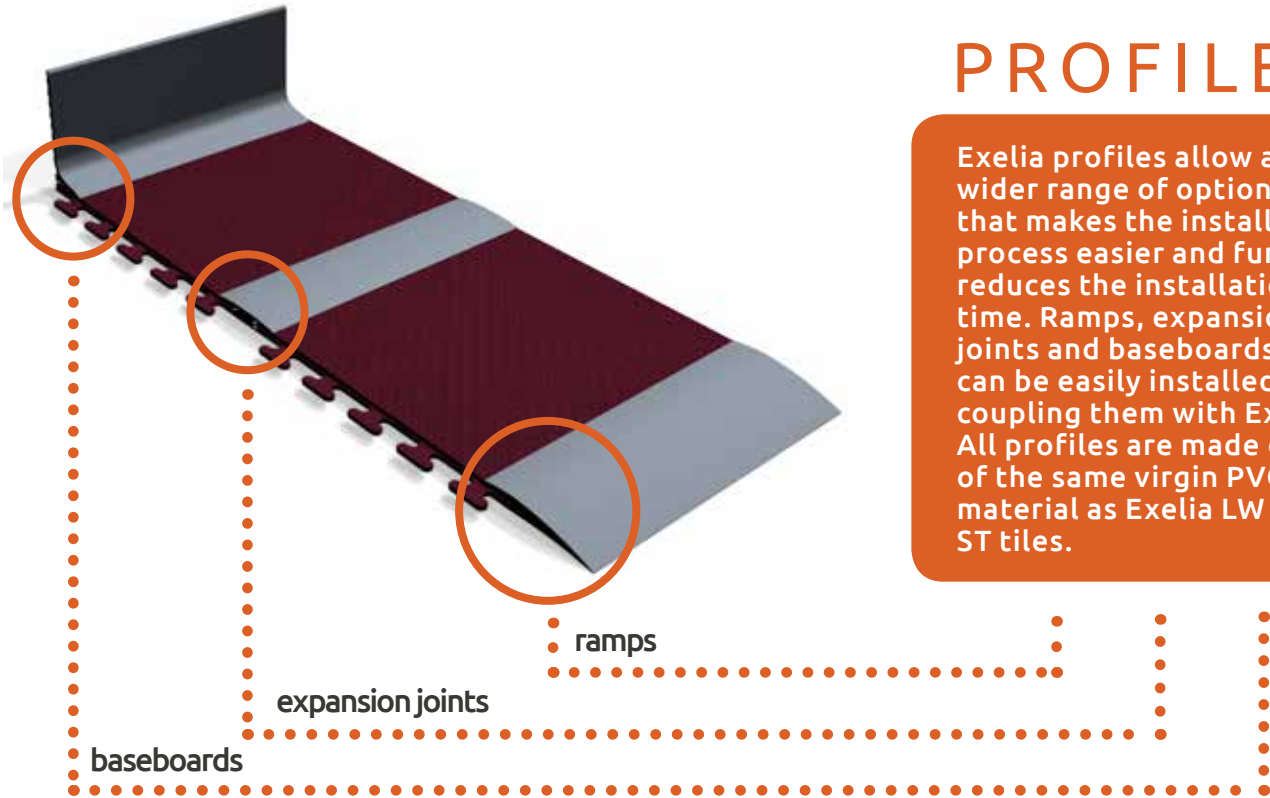


## Expansion Joint

This expansion joint is designed to allow for thermal expansion of the tiles in environments exposed to wide temperature ranges.

## PROFILES

Exelia profiles allow a wider range of options that makes the installation process easier and further reduces the installation time. Ramps, expansion joints and baseboards can be easily installed by coupling them with Exelia. All profiles are made out of the same virgin PVC material as Exelia LW and ST tiles.



## Adhesives

We recommend using a neoprene based adhesive when installing baseboards and ramps in heavy-duty applications that are subject to busy vehicle traffic. Please ask one of our local technical support agents for additional information and assistance.



## Welding cords

Tiles can be welded together to make a homogeneous and 100% liquid-proof flooring. With a variety of colored welding cords, there are many different combinations that can make the look of your Exelia floor unique.